

**PKP4 Antibody (C-term)**  
**Affinity Purified Rabbit Polyclonal Antibody (Pab)**  
**Catalog # AP20495b**

**Specification**

---

**PKP4 Antibody (C-term) - Product Information**

Application	WB, IHC-P,E
Primary Accession	<a href="#">Q99569</a>
Reactivity	Human, Mouse
Host	Rabbit
Clonality	Polyclonal
Isotype	Rabbit IgG
Calculated MW	131868
Antigen Region	1040-1068

**PKP4 Antibody (C-term) - Additional Information**

**Gene ID** 8502

**Other Names**

Plakophilin-4, p0071, PKP4

**Target/Specificity**

This PKP4 antibody is generated from rabbits immunized with a KLH conjugated synthetic peptide between 1040-1068 amino acids from the C-terminal region of human PKP4.

**Dilution**

WB~~1:1000

IHC-P~~1:100

E~~Use at an assay dependent concentration.

**Format**

Purified polyclonal antibody supplied in PBS with 0.09% (W/V) sodium azide. This antibody is purified through a protein A column, followed by peptide affinity purification.

**Storage**

Maintain refrigerated at 2-8°C for up to 2 weeks. For long term storage store at -20°C in small aliquots to prevent freeze-thaw cycles.

**Precautions**

PKP4 Antibody (C-term) is for research use only and not for use in diagnostic or therapeutic procedures.

**PKP4 Antibody (C-term) - Protein Information**

**Name** PKP4

**Function** Plays a role as a regulator of Rho activity during cytokinesis. May play a role in

junctional plaques.

#### Cellular Location

Cell junction, desmosome. Cytoplasm, cytoskeleton, spindle. Midbody Cell membrane; Peripheral membrane protein. Note=Associated with the pericentrosomal region in interphase and with spindle poles during mitosis. In anaphase, during chromosome segregation, is recruited to the central microtubule bundle, focussed at the spindle midzone and ultimately localizes to the midbody at cytokinesis. Constituent of the midbody cytoskeletal matrix. Colocalized with desmoplakin at desmosomal junctional plaques in cultured epithelial cells

#### Tissue Location

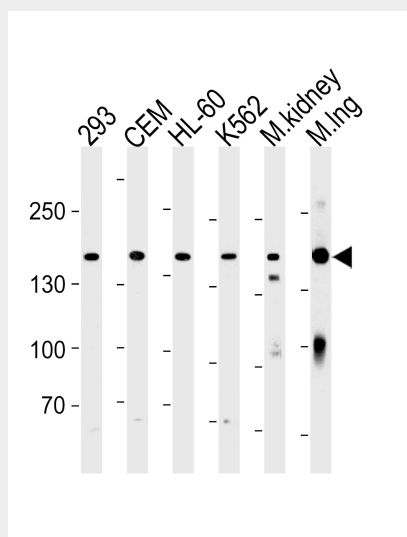
Expressed in salivary glands (at protein level) (PubMed:30479852). Expressed in arrector pili muscle (at protein level) (PubMed:29034528).

### PKP4 Antibody (C-term) - Protocols

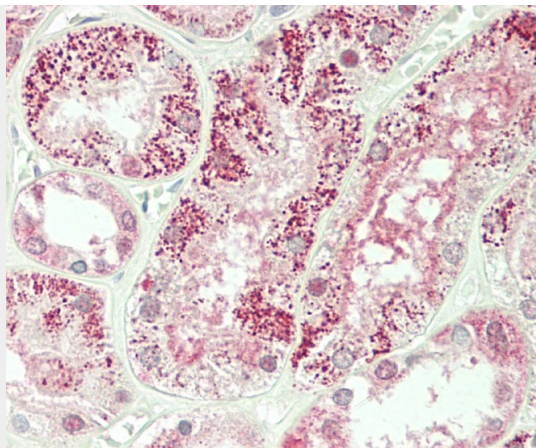
Provided below are standard protocols that you may find useful for product applications.

- [Western Blot](#)
- [Blocking Peptides](#)
- [Dot Blot](#)
- [Immunohistochemistry](#)
- [Immunofluorescence](#)
- [Immunoprecipitation](#)
- [Flow Cytometry](#)
- [Cell Culture](#)

### PKP4 Antibody (C-term) - Images



PKP4 Antibody (C-term) (Cat. #AP20495b) western blot analysis in 293,CEM,HL-60,K562 cell line and mouse kidney,lung tissue lysates (35ug/lane).This demonstrates the PKP4 antibody detected the PKP4 protein (arrow).



Formalin-fixed and paraffin-embedded H.kidney tissue reacted with PKP4 Antibody (C-term) (Cat#AP20495b).

#### **PKP4 Antibody (C-term) - Background**

Plays a role as a regulator of Rho activity during cytokinesis. May play a role in junctional plaques.

#### **PKP4 Antibody (C-term) - References**

- Hatzfeld M., et al. J. Cell Sci. 109:2767-2778(1996).  
Hillier L.W., et al. Nature 434:724-731(2005).  
Salomon A.R., et al. Proc. Natl. Acad. Sci. U.S.A. 100:443-448(2003).  
Zhang Y., et al. Mol. Cell. Proteomics 4:1240-1250(2005).  
Tao W.A., et al. Nat. Methods 2:591-598(2005).